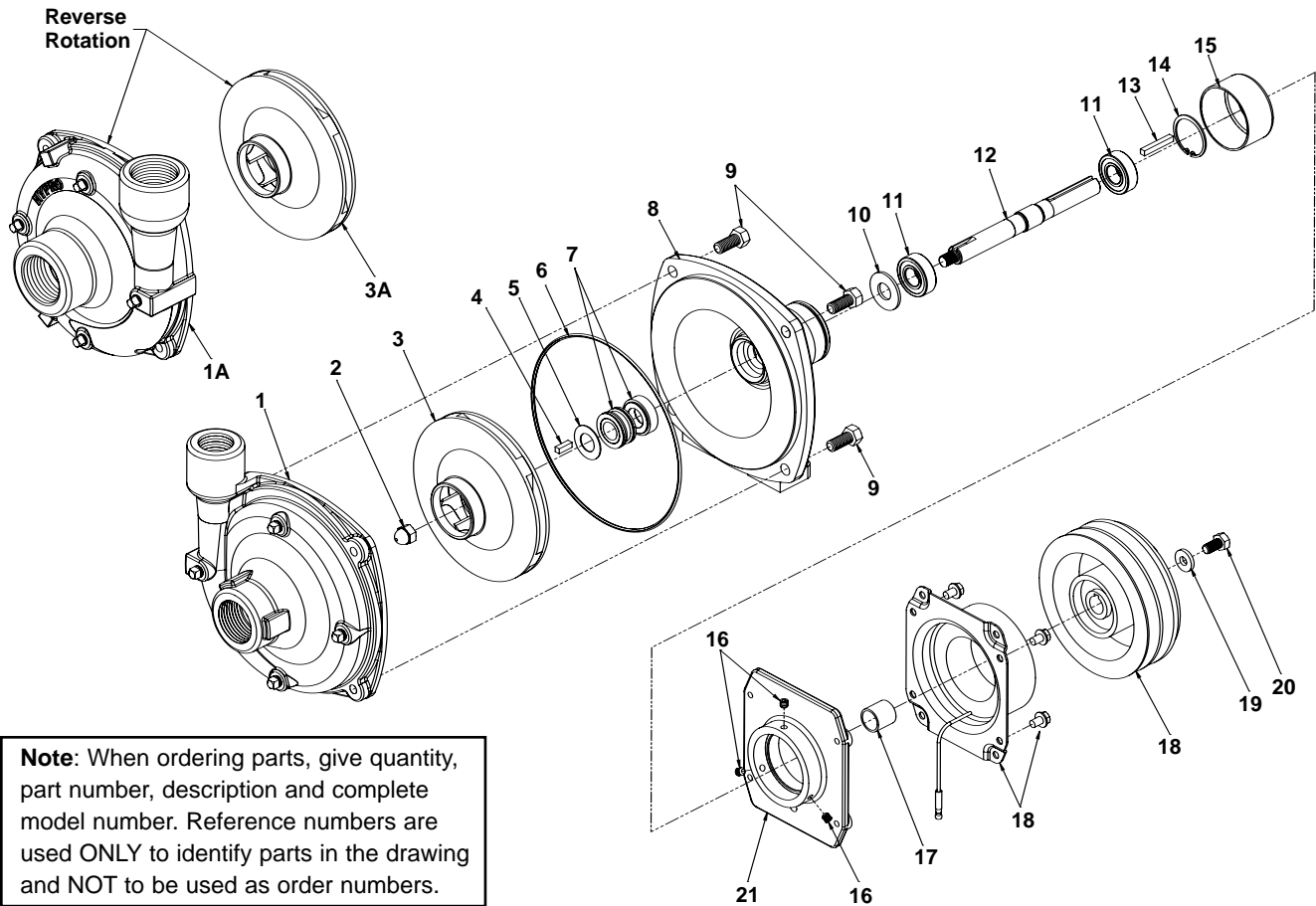


# Models 9202C, 9202S, 9262C-C and 9262S-C



**Note:** When ordering parts, give quantity, part number, description and complete model number. Reference numbers are used ONLY to identify parts in the drawing and NOT to be used as order numbers.

Clutch Kit No. 3430-0592 for 9262C-C, 9262S-C & 9262S-CR consists of:

(3) Ref. 16 Set Screw; (1) Ref. 17 Spacer; (1) Ref. 18 Magnetic Clutch; (1) Ref. 19 Washer, 3/4 OD x 5/16 ID x 1/8; (1) Ref. 20 Hex Head Cap Screw; and (1) Ref. 21 Mounting Bracket - Clutch

Seal Kit No. 3430-0332 for 9202C & 9262C-C consists of:

(1) Ref. 5 Gasket  
(1) Ref. 6 O-ring  
(1) Ref. 7 Mechanical Seal

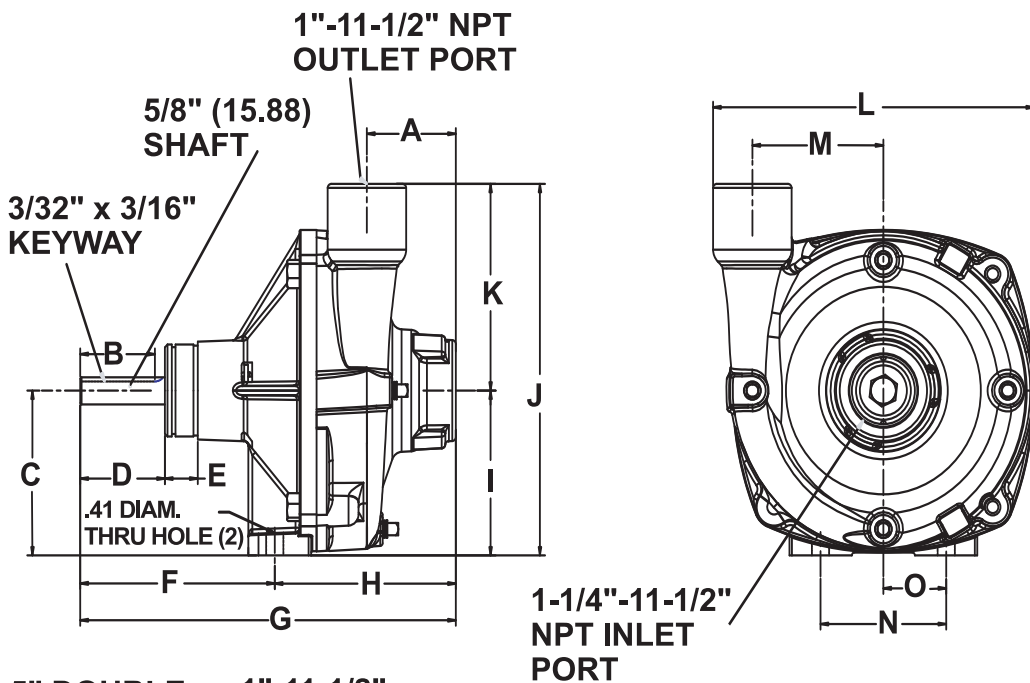
Seal Kit No. 3430-0589 (Silicon Carbide) for 9202S, 9262S-C & 9262S-CR consists of:

(1) Ref. 6 O-ring  
(1) Ref. 7 Mechanical Seal

Ref. No.	Qty. Req'd.	Part No.	Description	Ref. No.	Qty. Req'd.	Part No.	Description
1	1	0150-9200C	Pump Casing (9202C, 9262C-C) CCW Rot.	9	4	2210-0020	Head Hex Cap Screw (9202C, 9262C-C)
1	1	0156-9200S1	Pump Casing (9202S, 9262S-C)	9	4	2210-0125	Head Hex Cap Screw (9202S, 9262S-C, 9262S-CR)
1A	1	0152-9001S1	Pump Casing (9262S-CR)	10	1	1410-0056	Slinger Seal
2	1	2253-0002	Impeller Nut-Cast Series (9202C, 9262C-C)	11	2	2000-0010	Ball Bearing
2	1	2253-0006	Impeller Nut-Stainless Series (9202S, 9262S-C, 9262S-CR)	12	1	0505-9200	Shaft
3	1	0401-9100P	Impeller - Nylon (9202C, 9262C-C)	13	1	1610-0004	Key (9262C-C, 9262S-C, 9262S-CR)
3	1	0402-9100P	Impeller - Poly (9202S, 9262S-C)	14	1	1820-0013	Bearing Retainer
3A	1	0403-9100P	Impeller - CCW Rotation (9262S-CR)	15	1	2300-0025	Protective Cover (9202C, 9262C-C)
4	1	1610-0015	Key (9202C, 9262C-C)	16	3	2230-0001	Set Screw (9262C-C, 9262S-C, 9262S-CR)
4	1	1610-0044	Key (9202S, 9262S-C, 9262S-CR)	17	1	1410-0107	Spacer (9262C-C, 9262S-C, 9262S-CR)
5	1	1700-0100	Gasket (9202C, 9262C-C)	18	1	2526-0012	Magnetic Clutch Assy. (9262C-C, 9262S-C, 9262S-CR)
6	1	1720-0083	O-ring	19	1	2270-0092	Washer (9262C-C, 9262S-C, 9262S-CR)
7	1	2120-0009	Mechanical Seal (9202C, 9262C-C)	20	1	2210-0003	Head Hex Cap Screw (9262C-C, 9262S-C, 9262S-CR)
7	1	2120-0039	Mechanical Seal (9202S, 9262S-C, 9262S-CR)	21	1	0753-9200C	Mounting Bracket - Clutch (9262C-C, 9262S-C, 9262S-CR)
8	1	0750-9200C3	Mounting Flange (9202C, 9262C-C)				
8	1	0756-9200S	Mounting Flange (9202S, 9262S-C, 9262S-CR)				

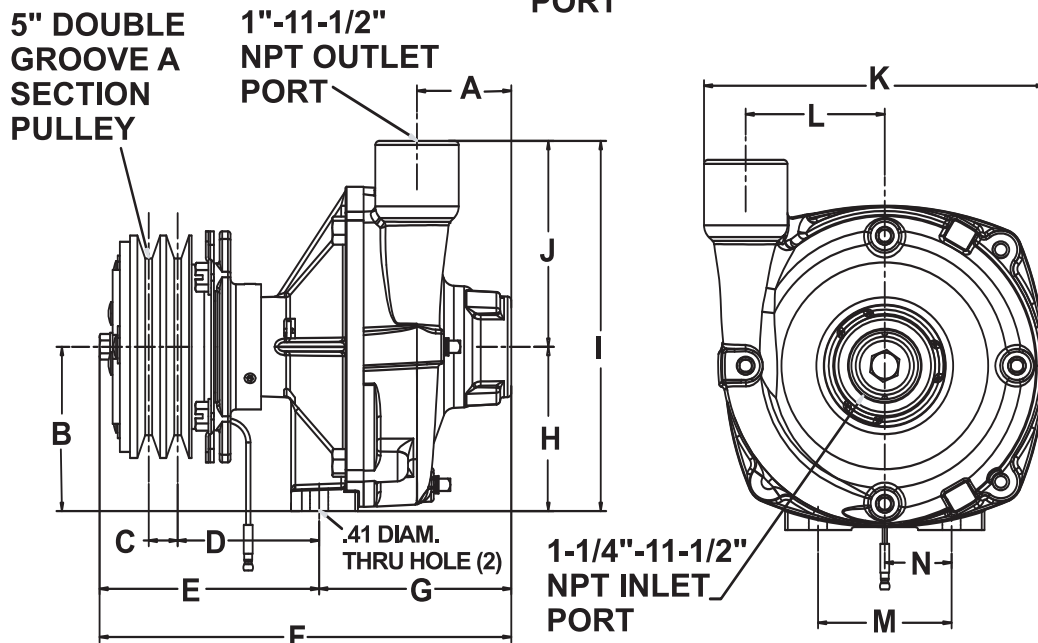
9202 and 9262 Series	RPM	GPM at 10 PSI	HP	GPM at 20 PSI	HP	GPM at 40 PSI	HP	GPM at 60 PSI	HP	GPM at 80 PSI	HP	GPM at 100 PSI	HP	GPM at 120 PSI	HP	GPM at 140 PSI	HP
	2400	50	1.3	46	1.2												
3600	67	3.7	66	3.7	62	3.5	34	2.6									
4200	75	5.7	75	5.7	75	5.7	66	5.3	44	4.2							
5000	88	0.3	88	9.3	88	9.3	88	9.3	77	8.6	60	7.5					
6000	103	15.6	103	15.6	103	15.6	103	15.6	103	15.6	100	15.5	91	14.8	56	11.4	

9202 and 9262 Series	RPM	LPM at 0.7 BAR	HP	LPM at 1.4 BAR	HP	LPM at 2.8 BAR	HP	LPM at 4.1 BAR	HP	LPM at 5.5 BAR	HP	LPM at 6.9 BAR	HP	LPM at 8.3 BAR	HP	LPM at 9.7 BAR	HP
	2400	189	1.3	174	1.2												
3600	254	3.7	250	3.7	235	3.5	129	2.6									
4200	284	5.7	284	5.7	284	5.7	250	5.3	167	4.2							
5000	333	0.3	333	9.3	333	9.3	333	9.3	291	8.6	227	7.5					
6000	390	15.6	390	15.6	390	15.6	390	15.6	390	15.6	379	15.5	344	14.8	212	11.4	



**9202**

Dimensions		
	Inches	mm
A	2.13	54
B	1.78	45
C	3.69	93.7
D	2.02	51.3
E	0.78	19.9
F	4.64	117.8
G	9.01	228.9
H	4.37	111.1
I	3.69	93.7
J	8.25	209.6
K	4.56	115.9
L	7.78	197.7
M	3.06	77.8
N	3	76.2
O	1.5	38.1



**9262**

Dimensions		
	Inches	mm
A	2.12	53.8
B	3.69	93.7
C	0.65	16.5
D	3.18	80.7
E	4.93	125.3
F	9.25	235
G	4.32	109.7
H	3.69	93.7
I	8.32	211.2
J	4.63	117.5
K	7.66	194.5
L	3.13	79.4
M	3	76.2
N	1.5	38.1